

Academic Growth Partnership Program

Empowering Schools ,
Training Institutes and
Tuition Centers in Sharjah
through Strategic
Affiliation and Educational
Development Program

[Read more >>](#)



About Us

Cosmoversity is an innovative blended education provider in the UAE, offering globally recognized programs designed to empower learners with real-world skills. Whether you're advancing your career, pursuing higher education, or exploring new opportunities, we provide the flexibility and expertise you need to succeed.

01 Executive Summary



Lorem ipsum dolor sit amet, consectetur adipiscing elit. Donec quis erat et quam iaculis faucibus at sit amet nibh.

02 Background and Rationale



Lorem ipsum dolor sit amet, consectetur adipiscing elit. Donec quis erat et quam iaculis faucibus at sit amet nibh.

03 Value Propositions for Affiliates



Lorem ipsum dolor sit amet, consectetur adipiscing elit. Donec quis erat et quam iaculis faucibus at sit amet nibh.

04 Affiliation Framework



Lorem ipsum dolor sit amet, consectetur adipiscing elit. Donec quis erat et quam iaculis faucibus at sit amet nibh.

05 Operational Guidelines



Lorem ipsum dolor sit amet, consectetur adipiscing elit. Donec quis erat et quam iaculis faucibus at sit amet nibh.

06 Marketing and Promotion



Lorem ipsum dolor sit amet, consectetur adipiscing elit. Donec quis erat et quam iaculis faucibus at sit amet nibh.

07 Marketing and Promotion



Lorem ipsum dolor sit amet, consectetur adipiscing elit. Donec quis erat et quam iaculis faucibus at sit amet nibh.

07 Referral Expectations



Lorem ipsum dolor sit amet, consectetur adipiscing elit. Donec quis erat et quam iaculis faucibus at sit amet nibh.

07 Timeline and Calendar



Lorem ipsum dolor sit amet, consectetur adipiscing elit. Donec quis erat et quam iaculis faucibus at sit amet nibh.

07 Conclusion and Next Steps



Lorem ipsum dolor sit amet, consectetur adipiscing elit. Donec quis erat et quam iaculis faucibus at sit amet nibh.





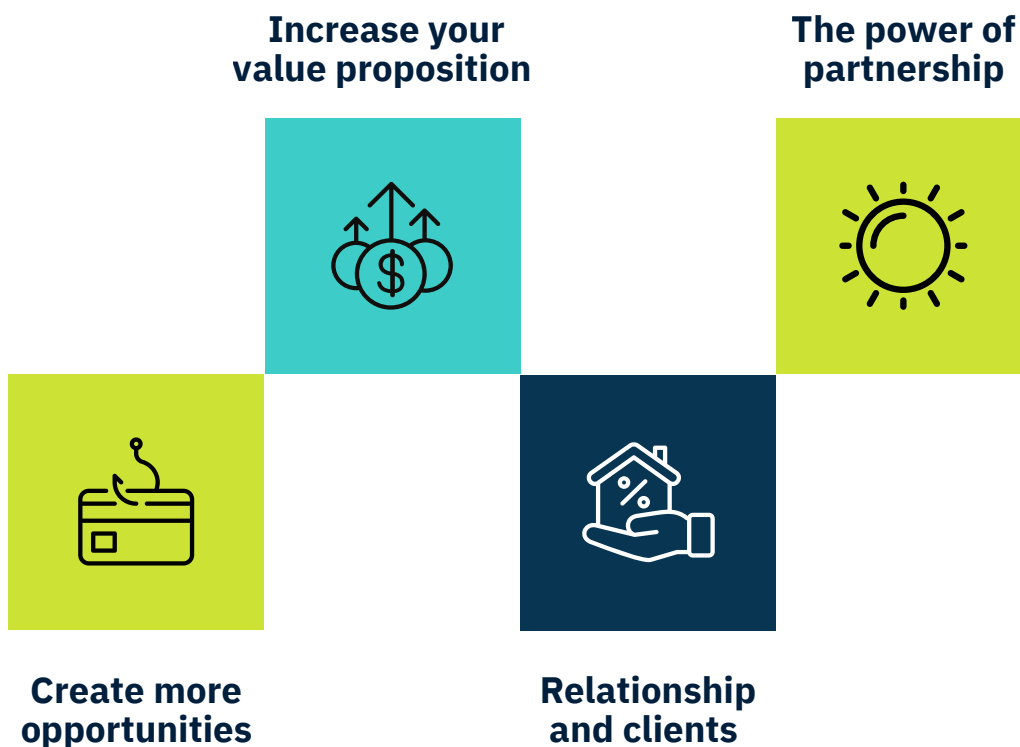
This growth partnership between Cosmoversity and its growth partner creates opportunities for shared expertise, expanded networks, and mutual advancement, ensuring sustainable success for all involved



Executive Summary

THE FIRST STEP TO UNDERSTAND MUTUAL BENEFICIAL BUSINESS RELATIONSHIP

Cosmoversity is pleased to present the ‘Academic Growth Partnership Program’—a strategic initiative designed to elevate small schools and tuition centers in Sharjah. This program aims to foster academic excellence, holistic development, and sustainable growth through targeted affiliation. By joining the program, educational institutions gain access to comprehensive developmental resources, training modules, recognition awards, career counseling, and collaborative marketing opportunities. Our vision is to build a thriving educational ecosystem where every partner benefits from shared knowledge, enhanced reputation, and increased student admissions.



Background and Rationale

UNDERSTAND YOUR ADMISSIONS

Admissions remain the lifeblood of educational institutions, especially for small schools and tuition centers facing competitive pressures and evolving academic standards. Partnerships with established entities like Cosmoversity offer access to expert resources, proven developmental frameworks, and a network of like-minded educators.

This program is designed to bridge gaps in educational quality, operational excellence, and market reach—delivering tangible value and measurable outcomes for participating schools and centers.

Program Structure

THE ACADEMIC GROWTH PARTNERSHIP PROGRAM OFFERS A COMPREHENSIVE SUITE OF EDUCATIONAL AND PROFESSIONAL INITIATIVES DESIGNED TO ADDRESS THE EVOLVING NEEDS OF SMALL SCHOOLS AND TUITION CENTERS IN SHARJAH. THROUGH A BLEND OF ACADEMIC PATHWAYS, STUDENT AND FACULTY DEVELOPMENT, AND COMMUNITY ENGAGEMENT, THE PROGRAM AIMS TO PROVIDE HOLISTIC GROWTH OPPORTUNITIES FOR ALL PARTICIPANTS.

Academic Pathways

- L3, HND, and MBA Programs: Accredited and internationally benchmarked progression routes, supporting students in achieving advanced qualifications and opening doors to global opportunities.
- Certificates and Diplomas: Targeted short-term courses and skill-building modules designed for both students and educators, fostering personal and professional advancement.



Program Structure

Professional Development

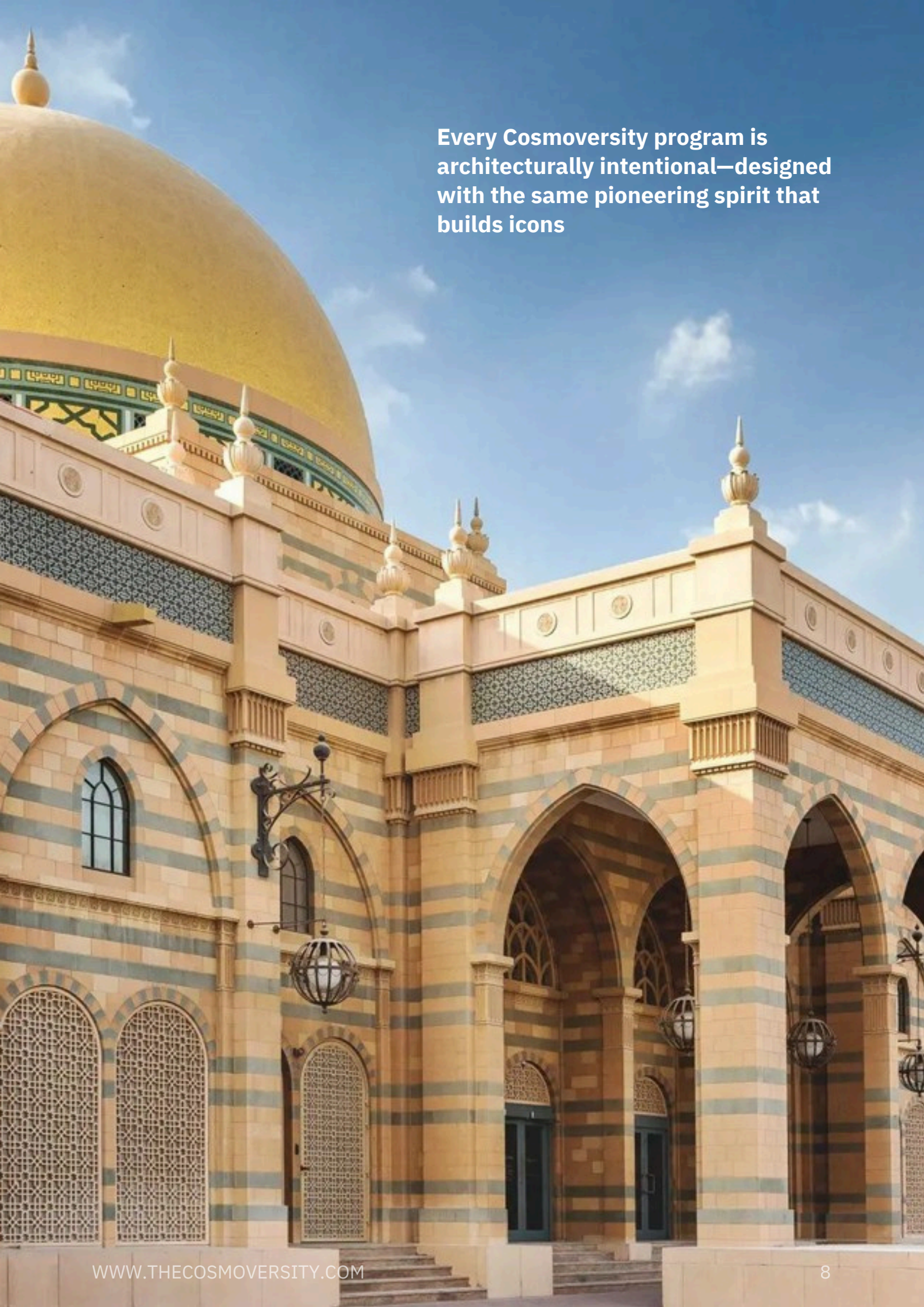
- Corporate Training: Tailored workshops for educators and administrative staff to enhance leadership, management, and instructional competencies.
- Faculty Development Programs: Ongoing training sessions, seminars, and mentoring for teachers, ensuring continuous upskilling and alignment with modern pedagogical practices.

Student Support

- Student Counseling: One-on-one and group guidance sessions addressing academic, personal, and career-related concerns, fostering overall student well-being.
- Student Development Programs: Structured activities and workshops aimed at nurturing essential life skills, communication, teamwork, and adaptability.
- Psychometric Tests: Scientifically grounded assessments to identify student strengths, learning styles, and aptitudes, guiding informed academic and career choices.
- Self-Awareness Initiatives: Programs designed to enhance self-reflection, emotional intelligence, and goal-setting, empowering students to take charge of their development.

Parent and Community Engagement

- Parent Seminars: Informative sessions equipping parents with strategies to support their children's academic and personal growth.
- Webinars: Interactive online events featuring experts on current educational trends, student wellbeing, and effective learning practices.
- Corporate Interactions: Partnerships with industry leaders to expose students to real-world scenarios, internships, and career guidance.
- Guest Lectures: Invited talks from distinguished professionals and thought leaders, inspiring both students and faculty.



Every Cosmoversity program is architecturally intentional—designed with the same pioneering spirit that builds icons

Value Propositions for Our Growth Partners

THE PARTNERSHIP OUTLINES A COMPREHENSIVE STRATEGY DESIGNED TO ENHANCE EDUCATIONAL INSTITUTIONS BY PROVIDING EXTENSIVE SUPPORT FOR BOTH STUDENTS AND STAFF ACROSS FIVE KEY AREAS. THIS STRATEGY INCLUDES DEVELOPING BESPOKE DEVELOPMENTAL PROGRAMS AIMED AT BUILDING CRITICAL FUTURE-READY SKILLS IN STUDENTS, ALONGSIDE ROBUST PROFESSIONAL DEVELOPMENT SESSIONS FOR EDUCATORS COVERING MODERN PEDAGOGICAL METHODS LIKE AI INTEGRATION AND INNOVATIVE LEADERSHIP FRAMEWORKS. FURTHERMORE, THE OFFERINGS FEATURE EXPERT ACADEMIC AND CAREER PATHWAY COUNSELLING TO GUIDE STUDENTS TOWARD SUCCESSFUL GLOBAL UNIVERSITY ADMISSIONS, SUPPORTED BY THE HOSTING OF PRESTIGIOUS ANNUAL RECOGNITION AWARDS TO CELEBRATE INSTITUTIONAL EXCELLENCE AND BUILD PUBLIC VISIBILITY. AFFILIATED PARTNERS ALSO BENEFIT FROM AN ECOSYSTEM OF EXCLUSIVE PRIVILEGES, GRANTING PRIORITY ACCESS TO SELECT DIGITAL RESOURCES, RESEARCH PROJECTS, AND VIP CAMPUS EVENTS RESERVED SOLELY FOR THEIR NETWORK.

Bespoke Developmental Programs for Students & Staff Elevate your academic ecosystem with university-caliber enrichment.

Go beyond the standard curriculum. We collaborate with your leadership to design and deliver targeted modules that ignite curiosity and build critical future-ready skills.

- For Students: Dynamic workshops in Financial Literacy, Entrepreneurial Thinking, Advanced Debate, and STEM Innovation, giving them a decisive edge in university applications and beyond.
- For Educators: Custom subject-matter masterclasses and Advanced Placement (AP) enrichment sessions, directly enhancing classroom delivery and student performance.

Value Propositions for Our Growth Partners

CUTTING-EDGE PROFESSIONAL DEVELOPMENT. INVEST IN YOUR GREATEST ASSET: YOUR FACULTY AND LEADERS.

Equip your team with the latest pedagogical strategies and leadership frameworks through certified training sessions led by our acclaimed Cosmoversity faculty.

- **Innovative Pedagogy:** Workshops on AI integration, flipped classrooms, and experiential learning models.
- **Leadership Excellence:** Programs focused on instructional leadership, data-driven management, and academic innovation.
- **Flexible Delivery:** Choose from on-site workshops, virtual masterclasses, or immersive sessions on our campus.

PRESTIGIOUS ANNUAL RECOGNITION AWARDS CELEBRATE EXCELLENCE AND BUILD LEGACY.

Partner with us to host a distinguished awards ceremony, honoring the outstanding achievements within your school community and generating positive public recognition.

- **Celebrated Categories:** Including "CosmoFuture Teacher of the Year," "The Pioneering Principal Award," and "Student Innovator of the Year."
- **High-Profile Visibility:** Winners receive trophies, media features, and professional development grants, reflecting brilliantly on your institution's standards.



Value Propositions for Our Growth Partners

EXPERT ACADEMIC & CAREER PATHWAY COUNSELLING SHAPE EXCEPTIONAL FUTURES FOR STUDENTS AND STAFF.

Leverage our expertise in global university admissions and industry trends to provide unparalleled guidance, turning aspirations into actionable plans.

- **Student Pathfinding:** Specialized workshops on global university selection, personal statement crafting, and interview success for top-tier programs.
- **Career Discovery:** Interactive panels with industry leaders and Cosmoversity alumni across diverse fields.
- **Staff Advancement:** Professional growth clinics for educators seeking career progression pathways.

AN ECOSYSTEM OF EXCLUSIVE PRIVILEGES BECOME A VALUED MEMBER OF OUR INNER CIRCLE.

Gain priority access to a world of resources and opportunities, reserved solely for our affiliate network.

- **VIP Event Access:** Reserved seating for your community at our premier lectures, industry conferences, and cultural events.
- **Premium Resources:** Shared access to select digital libraries, research publications, and educational tools.
- **First-Look Collaborations:** Exclusive invitation for your students to participate in high-profile corporate challenges and sponsored research projects with our partners.





CHAPTER 01

Your outlook
**Improve Your
Finances**

Operational Guidelines

Academic Pathways

Operational Guidelines for Affiliate Management & Quality Assurance

Policy 1: Adherence to Governing Rules, Regulations, and Standards

- Purpose: To ensure uniformity in brand reputation, academic integrity, and operational excellence across all affiliated institutions, thereby safeguarding the value of the global credential.
- Policy Statement: All affiliated institutions, herein referred to as "Academic Growth Partners" (AGPs), are contractually bound to fully implement and maintain Cosmoversity's prescribed standards in all aspects of their operation.
- Detailed Protocols:
 - a. Code of Conduct: AGPs must uphold the highest ethical standards in student recruitment, marketing, faculty treatment, and financial transactions. Any form of misrepresentation or unethical practice is grounds for immediate remedial action or termination of affiliation.
 - a. Academic Quality Standards: AGPs must deliver the approved curriculum using faculty that meet minimum qualification criteria (as defined by Cosmoversity and relevant local accreditation bodies). Teaching methodologies, learning resources, and assessment patterns must align with Cosmoversity's pedagogical framework.
 - a. Operational & Reporting Protocols: AGPs must submit standardized reports on a quarterly and annual basis. These include, but are not limited to: financial health indicators, student enrollment and progression data, faculty profiles, facility upgrades, and minutes of key academic committee meetings. Failure to submit reports punctually triggers a formal compliance inquiry.
 - a. Compliance Mechanism: Non-adherence is managed through a staged process: (i) Formal written notice of non-compliance, (ii) Mandatory corrective action plan with a defined timeline, (iii) Suspension of rights to admit new students or issue certificates if non-compliance persists, (iv) Termination of the affiliation agreement.

Policy 2: Mandatory Annual Evaluation and Quality Enhancement Visits

- Purpose: To provide an objective, external assessment of the AGP's operational and academic health, fostering continuous improvement and verifying compliance with contractual obligations.
- Policy Statement: Each AGP will undergo a comprehensive on-site evaluation annually by Cosmoversity-appointed external evaluators. This process is a collaborative developmental tool and a critical compliance audit.

Operational Guidelines

Academic Pathways

Policy 2: Mandatory Annual Evaluation and Quality Enhancement Visits

- Detailed Protocols:
 - a. Evaluation Team: Evaluators are independent experts selected by Cosmoversity for their expertise in quality assurance, academic leadership, and specific subject areas. They have no conflict of interest with the AGP being reviewed.
 - b. Evaluation Scope: The review covers:
 - Academic Delivery: Classroom observations, sample assessments, student work, and faculty interviews.
 - Governance & Management: Review of policies, strategic planning, and leadership effectiveness.
 - Resources: Adequacy and maintenance of libraries, laboratories, IT infrastructure, and physical facilities.
 - Student Support Services: Career guidance, counseling, extracurricular activities, and grievance redressal mechanisms.
 - Financial Sustainability: Evidence of sound financial management sufficient to sustain academic operations.
 - c. Process & Cost:
 - AGPs are notified of the evaluation window (e.g., 60 days in advance).
 - A fixed administrative fee of AED 1,000 is payable by the AGP prior to the visit to cover the coordination, documentation, and report management. Travel and accommodation costs for evaluators are borne separately by Cosmoversity or as detailed in the master affiliation agreement.
 - The visit culminates in an exit meeting presenting preliminary findings.
 - d. Outcome: Within 30 days, the AGP receives a formal Evaluation Report containing commendations, observations, and a mandatory Quality Improvement Plan (QIP) with clear actions, responsibilities, and deadlines. The AGP's commitment to implementing the QIP is a key metric for continued affiliation.

Policy 3: Strict Governance of Data Confidentiality and Usage

- Purpose: To establish a framework of trust by legally protecting sensitive information shared by AGPs, ensuring data is used exclusively for mutual growth, system improvement, and compliance, not for competitive advantage or unauthorized disclosure.

Operational Guidelines



Academic Pathways

- Detailed Protocols:
 - a. Data Classification & Access: Data is categorized (e.g., Public, Internal, Confidential, Restricted). Access to Confidential and Restricted data is limited to authorized Cosmoversity personnel directly involved in quality assurance, academic development, or strategic partnership management, under a principle of least privilege.
 - b. Usage Limitation: Confidential Partner Information may only be used for:
 - Aggregate benchmarking (where individual AGPs are not identifiable).
 - Developing targeted support programs and professional development for the AGP network.
 - Conducting the annual evaluation and supporting improvement initiatives.
 - Fulfilling reporting obligations to relevant international accreditation bodies, where required, with prior notice to the AGP.
 - a. Security Measures: Data is stored on encrypted, access-controlled servers. Physical documents are secured. All third-party processors (e.g., cloud service providers) are bound by strict Non-Disclosure Agreements (NDAs) and data processing agreements aligning with international standards (e.g., GDPR principles).
 - a. Breach & Consequences: Any suspected or actual breach of confidentiality must be reported immediately to the AGP and Cosmoversity's Data Protection Officer. A breach constitutes a material violation of the affiliation agreement, leading to investigation, potential legal action, and termination of the agreement. Cosmoversity will be liable only for damages directly arising from its proven gross negligence in handling said data, as per the limits defined in the master contract.



CHAPTER 02

Opportunities
unlimited
through
Shared Resources

Marketing and Promotion

Marketing & Promotion Partnership Framework: Co-Investing in Mutual Growth

Policy 1: Strategic Cross-Marketing & Co-Branded Campaigns

- Purpose: To create a powerful, unified marketing engine that leverages the collective reach of the Cosmoversity network, driving qualified student leads and enhancing brand authority for all Academic Growth Partners (AGPs). This transforms marketing from a cost center into a shared growth investment.
- Policy Statement: Cosmoversity and its AGPs will engage in sustained, reciprocal marketing initiatives designed to amplify visibility, communicate shared values of quality, and generate a robust pipeline of prospective students for partner institutions.
- Detailed Protocols & Partner Benefits:
- Centralized Digital Showcase: AGPs receive a dedicated, professionally crafted profile page on the Cosmoversity Global Network Portal. This page is optimized for search engines (SEO) and includes: a dynamic photo/video gallery, program offerings, faculty highlights, campus facilities, and direct inquiry forms. This serves as a trusted, central source of information for global students.
- Featured Content in Cosmoversity Channels:
- Newsletter Inclusion: AGP success stories, new program launches, and event announcements are regularly featured in Cosmoversity's global newsletter, distributed to a curated list of prospective students, educational counselors, and industry contacts.
- Social Media Amplification: AGP content is strategically shared across Cosmoversity's social media platforms (LinkedIn, Instagram, Facebook, etc.). We employ a "tag-and-share" model, where we feature your achievements and direct our followers to your institution's social handles, increasing your follower base and engagement.
- Global Campaigns: AGPs are integrated into Cosmoversity's international marketing campaigns (e.g., "Global Innovators Series," "Future Leaders Program"). This positions your institution within a narrative of international excellence.
- Co-Created Marketing Assets: We provide AGPs with customizable, on-brand templates for brochures, digital ads, and presentations that clearly communicate the value of the Cosmoversity affiliation, ensuring local marketing efforts maintain global brand prestige.

Policy 2: Systematic Brand Enhancement & Credibility Leverage

- Purpose: To directly transfer the credibility and prestige of the Cosmoversity brand to each AGP, enhancing their local and regional market position, and providing students with the assurance of an internationally recognized standard.

Marketing and Promotion

Marketing & Promotion Partnership Framework: Co-Investing in Mutual Growth

- Policy Statement: Affiliation is visually and substantively integrated into all partner communications, creating an immediate perception of elevated quality and global connectivity.

Detailed Protocols & Partner Benefits:

- Official Branding Kit & Badges: Upon accreditation, AGPs receive an exclusive digital branding kit. This includes the "A Cosmoversity Partner Institution" seal, verifiable digital badges for websites and email signatures, and guidelines for its prominent display on all marketing materials, signage, and official documents.
- Network Visibility & Prestige: Your institution's logo is displayed in the "Our Global Network" section of the Cosmoversity website. This is not a static list; it is a dynamic, interactive map and directory frequented by students, parents, and educational agents worldwide seeking vetted, quality institutions.
- Credibility Narrative: We supply AGPs with key messaging points and data to articulate the value of the affiliation: "Our partnership with Cosmoversity means our curriculum is globally benchmarked, our quality is externally audited, and our students are part of an international network." This becomes a powerful differentiator in competitive student recruitment markets.

Policy 3: Collaborative Events for Direct Engagement & Lead Generation

- Purpose: To host high-impact, collaborative events that provide direct access to prospective students and families, demonstrate academic value, and foster a sense of community within the global network.
- Policy Statement: Cosmoversity and AGPs will co-invest in and co-host virtual and in-person events designed to engage audiences, showcase expertise, and convert interest into enrollment.
- Detailed Protocols & Partner Benefits:
- Co-Hosted Open Houses & Webinars: We collaborate on event planning, promotion, and execution.
- Promotion: Events are promoted through both Cosmoversity's global channels and the AGP's local channels, maximizing registrations.

Marketing and Promotion

Marketing & Promotion Partnership Framework: Co-Investing in Mutual Growth

- **Content:** Featuring both Cosmoversity's global academic leadership (speaking on international trends, graduate outcomes) and the AGP's local faculty (showcasing specific programs, campus life). This blend of global prestige and local relevance is highly attractive to families.
- **Specialized Seminars & Workshop Series:** Jointly develop and market professional development workshops, guest lectures by international experts, or industry-specific seminars. These position the AGP as a center of excellence and attract not only prospective students but also professionals seeking upskilling, broadening the institution's community impact.
- **Student Recruitment Fairs:** Cosmoversity facilitates or organizes regional and virtual student recruitment fairs where AGPs can showcase their offerings alongside network peers, benefiting from the aggregated draw of the entire brand.

Value Proposition Summary for Prospective Academic Growth Partners:

- **You Gain a Global Megaphone:** Move beyond the limitations of local marketing budgets. Tap into our established international platforms and audience to attract students you would not reach independently.
- **You Build Instant Credibility:** Our brand equity accelerates trust. The affiliation seal is a visual shorthand for quality that reassures parents and students in their decision-making process.
- **You Access Turnkey Marketing Resources:** Reduce the time and cost of producing high-quality, internationally-focused marketing materials. We provide the framework; you personalize it.
- **We Are Active Partners in Your Growth:** This is not a passive licensing agreement. Our marketing team works as an extension of yours, co-creating campaigns and events designed to fill your classrooms with motivated, qualified students.

By partnering with Cosmoversity, you are not just adopting a curriculum; you are activating a comprehensive Growth and Visibility Platform designed to elevate your institution's profile and performance in a competitive landscape.

A man with a beard and mustache, wearing a grey suit jacket, a white shirt with small black dots, and a black tie, is smiling broadly and giving a thumbs-up gesture. He is standing against a dark grey background.

CHAPTER 03

you're action
will make
**All the
Difference**

How to Get Started: Cosmoversity Growth Partner Onboarding

Once you have chosen the method that works best for you, here are some steps to get started:

STEP 01

Initial Connection & Strategic Fit Assessment

Purpose: To establish a mutual understanding of values, goals, and operational fit without obligation, ensuring a solid foundation for partnership.



STEP 02

Formal Application & Collaborative Due Diligence

Purpose: To transition from interest to commitment through a transparent evaluation and collaborative planning phase.



STEP 03

Partnership Launch & Empowered Activation

Purpose: To formally commence the partnership with hands-on support, ensuring a confident and successful go-live.

BUDGETING CAN BE A DIFFICULT TASK. BUT IT'S ONE THAT PAYS OFF IN THE LONG RUN.

Begin Your Growth Journey Today.
The first step is a conversation. Contact our Partnership Team to schedule your Discovery Meeting and receive a tailored pathway to elevating your institution's reach, reputation, and results.

Becoming a Cosmoversity Academic Growth Partner is a structured, transparent, and supportive journey designed to align your institution with global standards while setting you up for sustainable growth. Our three-step onboarding process is built for clarity and mutual success.

Onboarding Process

Onboarding Partnership Framework : Detailed Process, Steps and Guidelines

Step 1: Initial Connection & Strategic Fit Assessment

Purpose: To establish a mutual understanding of values, goals, and operational fit without obligation, ensuring a solid foundation for partnership.

Process: Inquiry & Discovery Meeting: Submit the online Partnership Interest Form on our website. A dedicated Partnership Development Manager will schedule a confidential virtual meeting with your leadership team.

- Strategic Dialogue: This 60-minute meeting focuses on:
- Your Vision: Understanding your institution's growth objectives, challenges, and student community.
- Our Framework: Presenting a detailed overview of the Cosmoversity partnership model—operational standards, quality assurance processes, and marketing benefits.
- Preliminary Fit Analysis: Discussing your current programs, infrastructure, and capacity to meet Cosmoversity's quality benchmarks.

Receive Your Personalized Proposal: Following the meeting, you will receive a preliminary, non-binding Partnership Outline. This document will summarize the discussion, outline potential program affiliations, detail the investment structure (including affiliation fees and the evaluation cost), and project a roadmap for implementation.

Outcome: You gain absolute clarity on what the partnership entails and its potential impact on your institution, enabling an informed decision to proceed.

Step 2: Formal Application & Collaborative Due Diligence

Purpose: To transition from interest to commitment through a transparent evaluation and collaborative planning phase.

Process: Submission of Formal Application: Upon deciding to proceed, you will submit a formal application package, including institutional profiles, leadership CVs, accreditation documents (if any), and facility details.

Cosmoversity is a community of shared growth, nurturing every learner with the dedication of a guardian and the strength of solidarity.



Onboarding Process

Onboarding Partnership Framework : Detailed Process, Steps and Guidelines

- **Comprehensive Diagnostic Review:** Cosmoversity's Academic Board will conduct a thorough review of your submission. This is not a pass/fail test but a diagnostic to identify your institution's strengths and areas for development within our framework.
- **Co-Development of the Partnership Plan:** You will then engage in a collaborative workshop (virtual or on-site) to co-create a Partnership Launch Plan. This critical document includes:
 - A tailored timeline for implementation.
 - A gap analysis and a supportive action plan to meet any outstanding standards.
 - A detailed marketing integration strategy for your institution.
 - Finalized affiliation agreement and service level agreements (SLAs).

Outcome: A clear, mutually-agreed, and actionable plan for launching the partnership, with all expectations, responsibilities, and support structures explicitly defined before any contract is signed.

Step 3: Partnership Launch & Empowered Activation

Purpose: To formally commence the partnership with hands-on support, ensuring a confident and successful go-live.

Process: Agreement Finalization & Onboarding Kick-off: After the Partnership Launch Plan is approved, the formal agreements are executed. Your institution is assigned a dedicated Relationship Manager, who will be your primary point of contact for operational support.

- **Activation Phase (Months 1-3):** This intensive launch support phase includes:
 - **Faculty & Staff Orientation:** Training sessions on Cosmoversity's academic protocols, quality ethos, and reporting systems.
 - **Marketing Integration:** Our team works with yours to activate your profile on the Cosmoversity Global Network Portal, issue press releases, and plan your first co-hosted event.
 - **Systems Access:** Provision of all operational handbooks, brand assets, and access to the partner portal for reporting and resources.

Onboarding Process

Onboarding Partnership Framework : Detailed Process, Steps and Guidelines

Official Accreditation Visit & Welcome: Within the first 6 months, an external evaluator will conduct the initial Annual Evaluation Visit (cost: AED 1,000). This supportive review culminates in your official accreditation as a Cosmoversity Academic Growth Partner and public announcement to our global network.

Outcome: Your institution is fully operational as a recognized Cosmoversity partner, with integrated systems, an executed launch marketing plan, and a clear path forward for quality enhancement and growth within the global network.

Begin Your Growth Journey Today.

The first step is a conversation. Contact our Partnership Team to schedule your Discovery Meeting and receive a tailored pathway to elevating your institution's reach, reputation, and results.



Let's work together !



REFERRAL EXPECTATIONS

To foster mutual growth, each affiliated institution is expected to refer a minimum of 20 new students per cycle to Cosmoversity programs. Referral tracking and support materials are provided to facilitate successful outcomes.



TIMELINE AND CALENDAR

- Program Cycles: Two six-month cycles per academic year (January–June, July–December).
- Scheduling: Affiliates receive a detailed calendar of training sessions, evaluation visits, and promotional events at the start of each cycle.



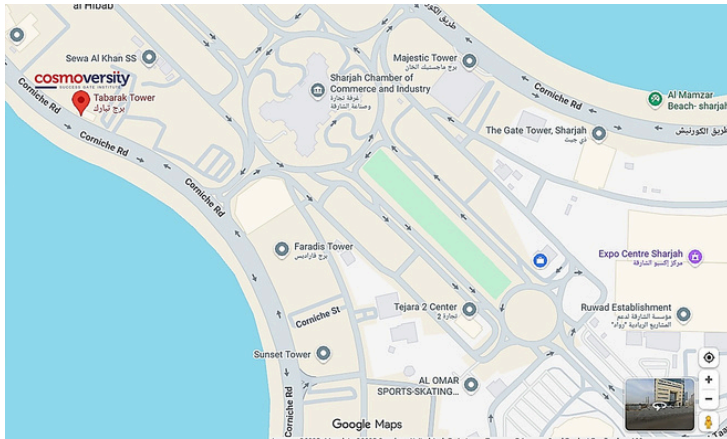
CONCLUSION AND NEXT STEPS

Cosmoversity invites forward-thinking school leaders and tuition center owners in Sharjah to join the Academic Growth Partnership Program. By affiliating, your institution will gain access to world-class resources, collaborative opportunities, and a pathway to sustained academic excellence. To express interest or schedule an initial consultation, please contact the Cosmo Affiliation Team at info@thecosmoversity.com.

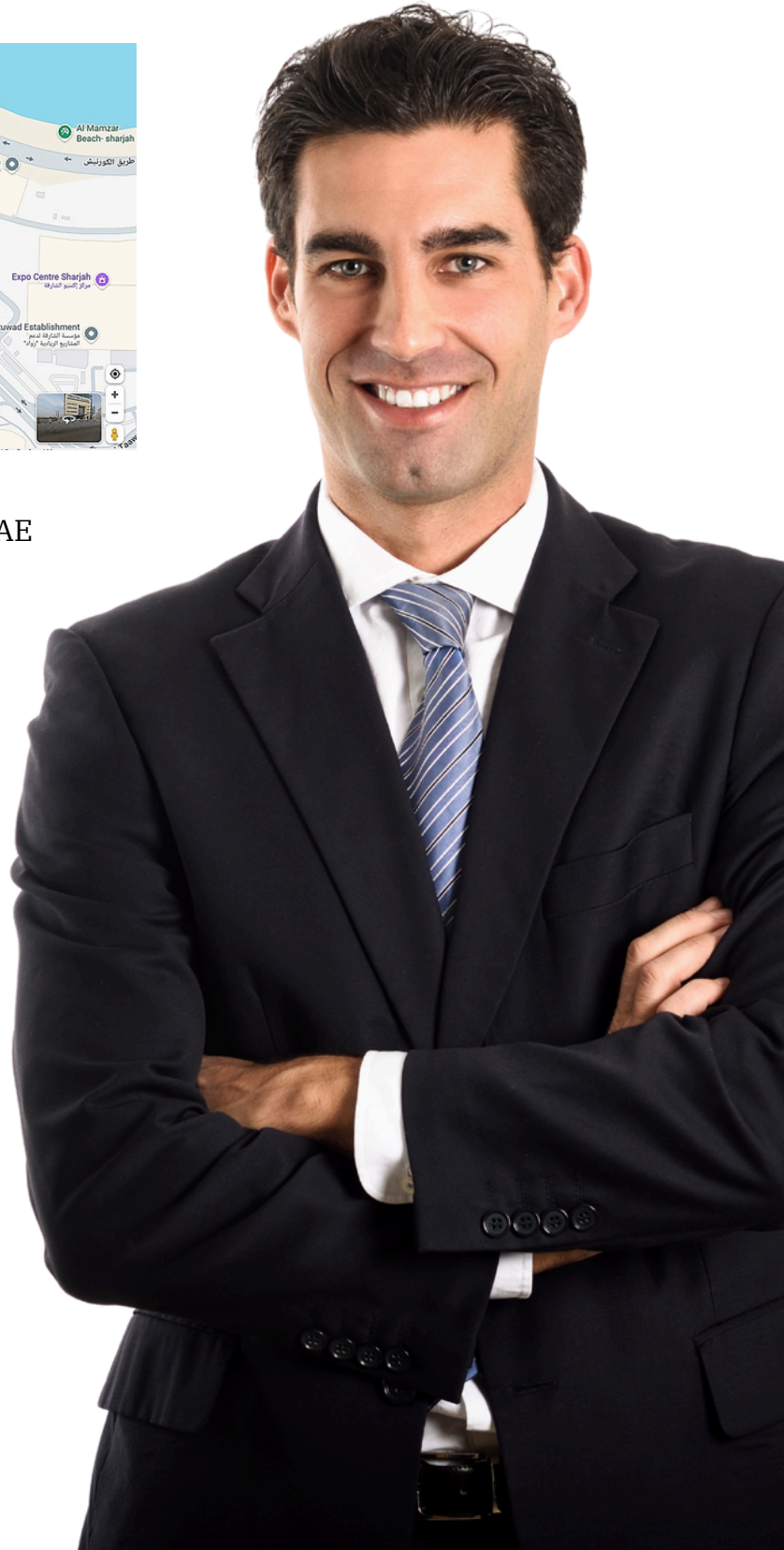
Together, let us shape the future of education in Sharjah.



Contact Us Now !



22 Floor, Office No. 2202,
Tabarak Tower, Al Mamzar , Sharjah ,UAE
Phone No. +971 6 565 0198
www.thecosmoversity.com
Mobile : +971 50 356 7611



Get In Touch

**22 Floor, Tabarak Tower, Al Mamzar,
Sharjah United Arab Emirates
info@thecosmoversity.com**



+971 6 565 0198

www.thecosmoversity.com



22 Floor, Office No. 2202,
Tabarak Tower, Al Mamzar,
Sharjah ,United Arab Emitates

Phone No. +971 6 565 0198
www.thecosmoversity.com
Mobile : +971 50 356 7611

